



# **USER MANUAL**

## **VIC-T30D**

### **Preface**

Thank you for purchasing VIC-T30D. This manual shows how to operate the device smoothly and correctly. Make sure to read this manual carefully before using this product. Please note that specification and information are subject to changes without prior notice in this manual. Any change will be integrated in the latest release. The manufacturer assumes no responsibility for any errors or omissions in this document.

# Content

<b>1</b>	<b>Notes and Cautions</b> .....	<b>3</b>
<b>2</b>	<b>System Introduction</b> .....	<b>3</b>
<b>2.1</b>	<b>Appearance</b> .....	<b>3</b>
<b>2.2</b>	<b>Full Kit</b> .....	<b>3</b>
<b>2.3</b>	<b>Specifications</b> .....	<b>3</b>
<b>3</b>	<b>Get Started</b> .....	<b>4</b>
<b>3.1</b>	<b>Install Software</b> .....	<b>4</b>
<b>3.2</b>	<b>Battery Charging &amp; SIM Card Installation</b> .....	<b>6</b>
<b>A.</b>	<b>Battery Charging</b> .....	<b>6</b>
<b>B.</b>	<b>SIM Card Installation</b> .....	<b>6</b>
<b>3.3</b>	<b>SET Parameter Instructions</b> .....	<b>6</b>
<b>4</b>	<b>Set Up</b> .....	<b>9</b>
<b>4.1</b>	<b>Set up on Watch Screen</b> .....	<b>9</b>
<b>4.2</b>	<b>Set up on computer via USB Cable</b> .....	<b>12</b>
<b>4.3</b>	<b>Set up by SMS Commands</b> .....	<b>15</b>
<b>5</b>	<b>SMS Tracking</b> .....	<b>18</b>
<b>5.1</b>	<b>Change the Inquiry Mode</b> .....	<b>18</b>
<b>5.2</b>	<b>In Normal Mode</b> .....	<b>18</b>
<b>5.3</b>	<b>In GOOGLEMAP Mode</b> .....	<b>19</b>
<b>5.4</b>	<b>Track on Google Earth &amp; Google Map</b> .....	<b>20</b>
<b>6</b>	<b>GPRS Tracking</b> .....	<b>21</b>
<b>6.1</b>	<b>Check APN, Set up IP Address &amp; Port Number</b> .....	<b>21</b>
<b>6.2</b>	<b>Start Tracking</b> .....	<b>25</b>
<b>7</b>	<b>Data Logger</b> .....	<b>27</b>
<b>A.</b>	<b>Setting of the Logger</b> .....	<b>27</b>
<b>B.</b>	<b>View the Recorded Waypoints</b> .....	<b>28</b>
<b>C.</b>	<b>Photo Logging</b> .....	<b>29</b>
<b>8</b>	<b>Troubleshooting</b> .....	<b>32</b>
<b>9</b>	<b>Worldwide APN (Access Point Name) List</b> .....	<b>33</b>

# 1 Notes and Cautions

- GSM network connection will determine the performance of the device.
- The satellite signal will be blanketed by cement and metallic material, so it's recommended to use it in an open field.
- To keep the best connection, please make sure the GPS antenna looks skywards.
- Do make sure the PIN code is deactivated.
- Don't let the device run at or above 50 degrees by, such as, exposing the device under the sunshine for a long time, for safety consideration.
- Put it in a covert place if using it for anti-theft.
- Risk of explosion may exist, if the battery is replaced by an incorrect type.
- Disposal of used battery should comply with the legal instructions.

# 2 System Introduction

## 2.1 Appearance



### Note:

- **Button A** is the "backward" key; **Joystick** is the "enter" key.
- When there is an incoming call, you can press **Joystick** to answer, and press **Button A** to hang off. If you cancel the call by Button A without answering it, or don't pick up the call and the call cancels auto in the end, the watch will send out a location message to **TIMER** number (mentioned later).
- If the watch malfunctions, activate the "reset" button.

## 2.2 Full Kit

- GPS Watch
- 1100mAh Polymer Li-ion Battery (built-in)
- CD (User manual, Software included)
- 2 PIN AC Adapter

## 2.3 Specifications

GSM/GPRS	
GSM/GPRS module	Simcom300 Tri-Band GSM module (GSM900/1800/1900MHz) (quad-band is optional)
GSM Antenna	Build-in
GPS	
GPS module	SIRF III 20 channels
Protocol	NMEA-0183 compliant protocol
GPS Antenna	Build-in active high sensitivity antenna
Accuracy	1-5m
Update rate	1 HZ
Start time	Cold start: 42s Warm start: 35s Hot start : 1s
Electrical	
Operating Voltage	3.3V
Charge voltage	4.5~5V
Standby	15mA
Operating	80mA
Battery	Polymer Li-ion 1100mAh (built-in)
other	
Size	65mm*43mm*19mm
Weight	45g (including battery)

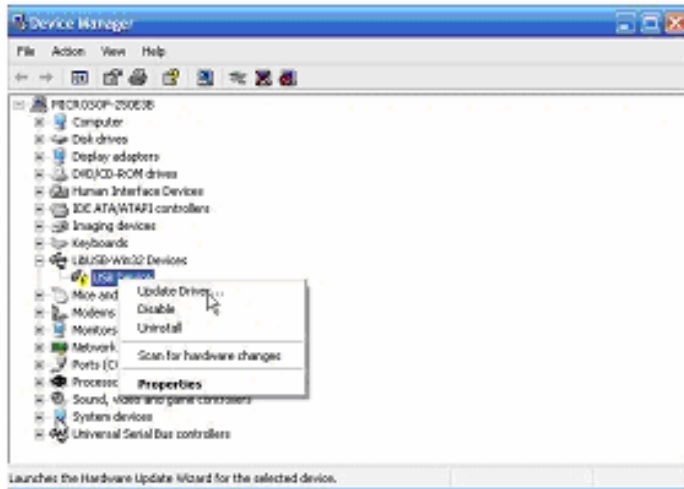
## 3 Get Started

### 3.1 Install Software

Before installing the GPS Server software, you should install **dotnetfx.exe**, **Google Earth.exe**. To configure the unit on computer, you also need install a driver. All are included in the CD.

- **Install USB Driver**

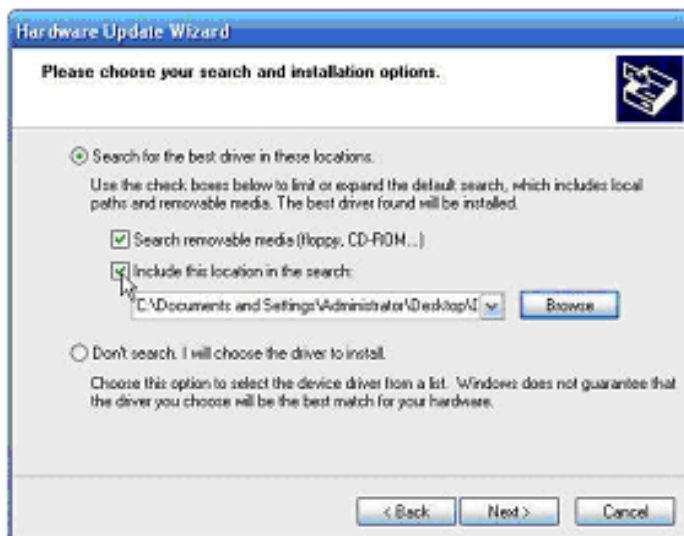
Power on the watch until the unit boots in, and then connects it with computer by USB cable, and the computer will ask you to install the driver. Please go to "**My computer**" and right click and choose the "**properties**", and move to "**hardware**" and choose "**devices manager**", to see "**USB Device**" in yellow exclamation mark (⚠), and right click as below:



Choose "Update Driver", and choose option "Advanced":



Choose the directory of the Driver and move to the next, and until finish installation:





### 3.2 Battery Charging & SIM Card Installation

#### A. Battery Charging

- At the first use, please charge the battery for 8 hours to full capacity.
- In later use, please charge 3-4 hours to its full. It is better to power off the device before charging.
- Connect the charger to power supply
- The background light will turn off when the battery is full.

#### B. SIM Card Installation

Place the SIM card in place as below:



### 3.3 Parameter instruction

The watch's working is controlled by a parameter. It consists of 26 digits, while divided into 9 different parts. The system recognizes it by sequence as below:

Digit	Definition	Value& Meaning	Remarks
1st-5th	Time Zone	GMT+12:00(01200) to GMT -13:00(11300)	GMT+00:00(00000)
6th-7th	GPS Reception Timer	00: keep receiving GPS. 01-99: turn on to receive GPS data in every 1 minute to 99 minutes.	00: keep receiving GPS.
8th-9th	SMS/GPRS Location Report Timer	00: device doesn't auto report location. 01-99: device auto reports to mobile phone in every 1 minute to 99 minutes	
10th	Battery Monitor	0: device doesn't check the battery level. 1-9: device will check the battery in every 1-9 minutes and alarm in SMS	

		when the battery level is too low.	
11th-16th	Device Password	Set a 6 digits password as from 000000-999999.	Default value is 000000.
17th-18th	Geofence	It ranges between "00"-99", and is calculated this way: **x50m (** is the value.), say, 03 is 150m, 14 is 700m.	"00", Geofence is off.
19th-20th	Speeding alarm	It ranges between "00"-99", and is calculated this way: **x10km/h (** is the value.), say, 04 is 40km/h, 08 is 80km/h.	"00", speeding alarm is off.
21st	Logging mode	"0" means to record by time; "1" means to record by distance.	Other input is invalid.
22nd-26th	Logging Interval	By time, it is "1-99999"s; By distance, it is "50-65000"meter.	Distance below 50m will cause drift in position.

**Note: This parameter is very important. It controls all the actions of our unit, such as Geofence alert,**

**Speeding alert etc. The user can change those values by:**

- a). Remotely sending SMS commands
- b). Connecting to computer via a USB cable
- c). Setting it up directly on the screen.

**For example:** To send text message to establish or change this parameter, you can send the text command as below:



- 00800: China's Time zone: GMT+8:00.
- 00: The watch keeps receiving GPS signal.
- 01: The watch auto reports the location in every 1 minute.
- 9: The watch will check the battery level every 9 minutes.
- 654321: The password is 654321.
- 06: Geofence district is formed on a 300 meters radius (6x50m).
- 08: The speed limit is 80km/h (8x10km/h).
- 0: The waypoints are recorded by time.
- 00050: The time interval is 50 seconds.

## § Time Zone

The device receives the time in Greenwich Mean Time (GMT). It is suggested setting it by the local Time Zone when using it.

1st digit indicates '+' (0) or '-' (1)

2nd and 3rd digits indicate hour difference to GMT.

4th and 5th digits indicate minute difference to GMT.

Values of time zones are shown as below:

Time Zone	Value	Time Zone	Value	Time Zone	Value
GMT-12:00	11200	GMT-2:00	10200	<b>GMT+5:45</b>	<b>00545</b>
GMT-11:00	11100	GMT-1:00	10100	GMT+6:00	00600
GMT-10:00	11000	<b>GMT</b>	<b>00000</b>	<b>GMT+6:30</b>	<b>00630</b>
GMT-9:00	10900	GMT+1:00	00100	GMT+7:00	00700

GMT-8:00	10800	GMT+2:00	00200	GMT+8:00	00800
GMT-7:00	10700	GMT+3:00	00300	GMT+9:00	00900
GMT-6:00	10600	<b>GMT+3:30</b>	<b>00330</b>	<b>GMT+9:30</b>	<b>00930</b>
GMT-5:00	10500	GMT+4:00	00400	GMT+10:00	01000
GMT-4:00	10400	<b>GMT+4:30</b>	<b>00430</b>	GMT+11:00	01100
GMT-3:00	10300	GMT+5:00	00500	GMT+12:00	01200
<b>GMT-3:30</b>	<b>10330</b>	<b>GMT+5:30</b>	<b>00530</b>	GMT+13:00	01300

**Note:** Other input is regarded as the default value (00000).

### § GPS Reception Timer

This value controls the GPS reception. The watch will fix GPS according to this timer.

"00": the watch is always on, to receive GPS data;

"01"-"99": the watch will turn on to receive GPS in every 1-99 minutes.

**Note:** Other input is regarded as the default value (00).

### § SMS/GPRS Location Report Timer

This value controls the auto location report in SMS as well as in GPRS.

"00": there is no auto location report;

"01"-"99": the watch will auto report according to the timer.

**Note:** Other input is regarded as the default value (00).

### § Battery Monitor

The watch will check the battery level at a predefined interval. When the battery runs away to a low level, it will send an alarm.

**Note:** The normal battery level ranges from 3400mv to 4200mv.

### § Geofence

Geofence defines a circular district. This circular district forms on a radius predefined by this value. After Geofence is set up, on breach of it, the watch will send two alerts to **TIMER**.

**Note:** a). You can specify the center point by a text command (refer to **Clause 4.3**), as well as by turning on Geofence on the watch screen.

b). The tracker will specify the first fixed location as the center point, when you turn on Geofence function while the tracker doesn't fix GPS.

### § Speeding Alarm

This value defines the speed limit. When the watch moves over the limit, it will send two alerts to **TIMER**.

It is suggested the speed limit be set no less than 50km/h. The limit below 50km/h may cause inaccurate

alert, for GPS signal may be affected.

## § Logging Mode

The watch can record the waypoints by time or distance. "0" means it records by time. "1" means it records by distance.

## § Logging Interval

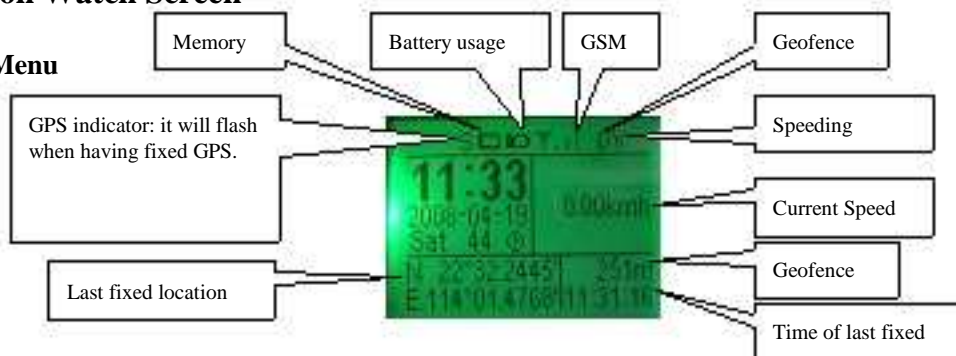
Recording by time, the value can be defined in the range of "1s-99999s"; Recording by distance, the value can be defined in the range of "50m-65000m".

**Note:** Input outside the range is invalid. You can define the distance by below 50m, but this may cause error in position

# 4 Set up

## 4.1 Set up on Watch Screen

### 3/4 Primary Menu



After entering into this interface, you can check out the time & date, as well as other different information.

As illustrated above:

- Indicates GPS reception. When it fixes GPS, this indicator will begin flash.
- Indicates memory usage, for waypoints storage.
- Indicates battery usage.
- Indicates GSM connection.
- Indicates Geofence & Speeding alert. If you turn on Geofence, "D" will show. If you turn on Speeding alert, "V" will show.

indicates the currently fixed location if GPS is available, and the current time. If GPS is not available, it indicates the last location, and the time of last fixed location.

## § System Menu A

Press **Button A**, to switch to **System Menu A**, and then scroll down / up to choose the option.



**Note:** When you want to activate Geofence, please stand still at the point, and then turn on Geofence. This point is the center point on which the round Geofence district is formed based.

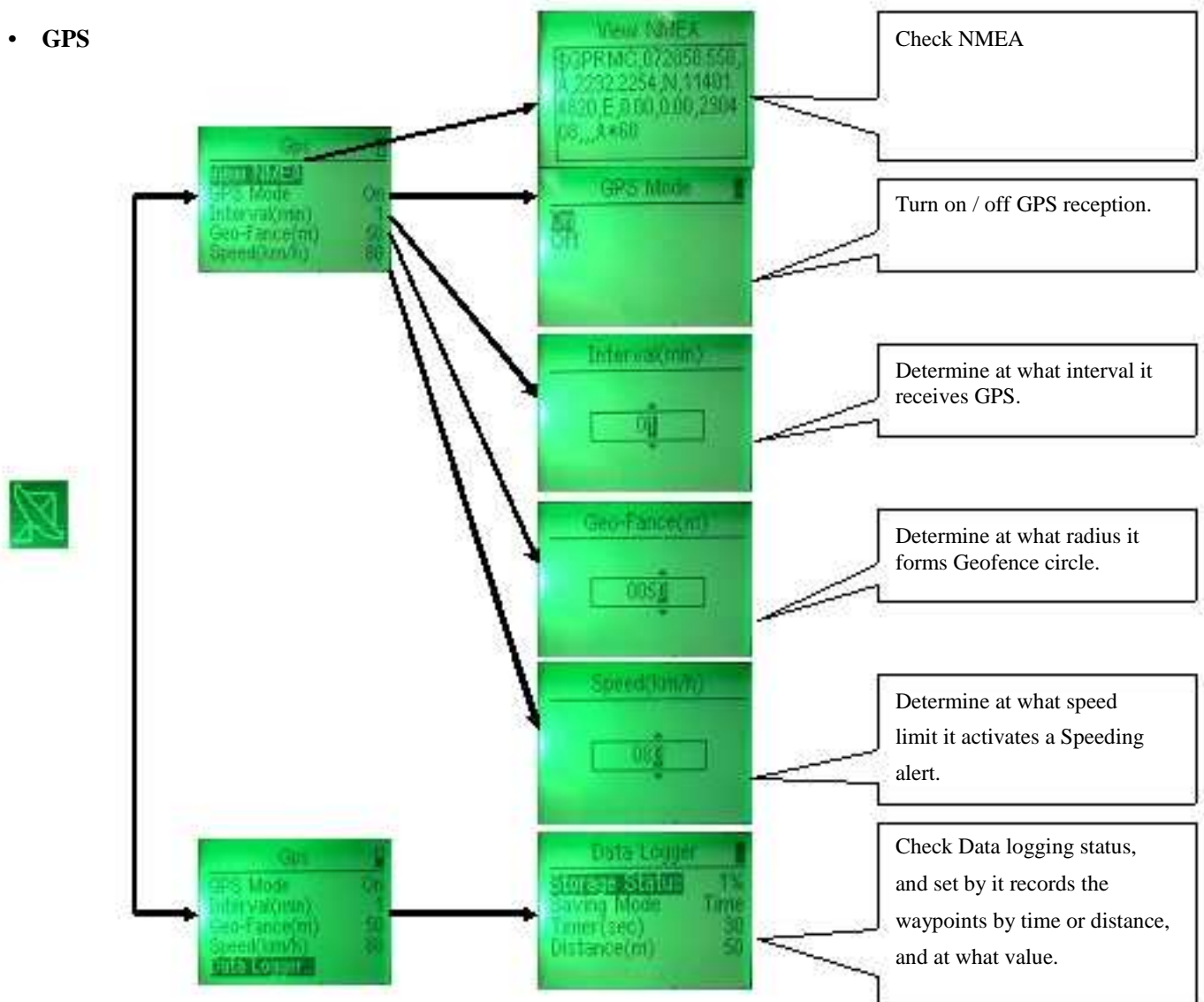
## § System Menu B

Press **Joystick**, to enter into **System menu B** as below.



This menu includes functions, such as GPS, Text message, Track Friends, Sports, Call out, Phone Book, Alarm Clock & System Settings.

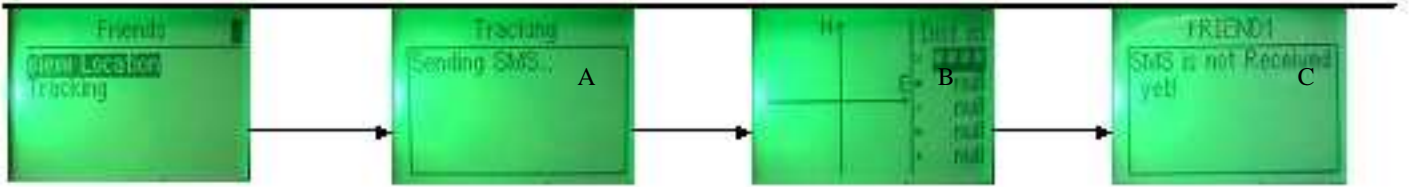
### • GPS



### • Friends (also called "Track Friends")



If A wears this watch, and B, C, D, E, F wears another 5 watches. A can track down the others directly on the screen by distance & direction. It is set this way: on B, C, D, E, F, A's number must be saved. Also, A should save B, C, D, E, F's numbers as well.

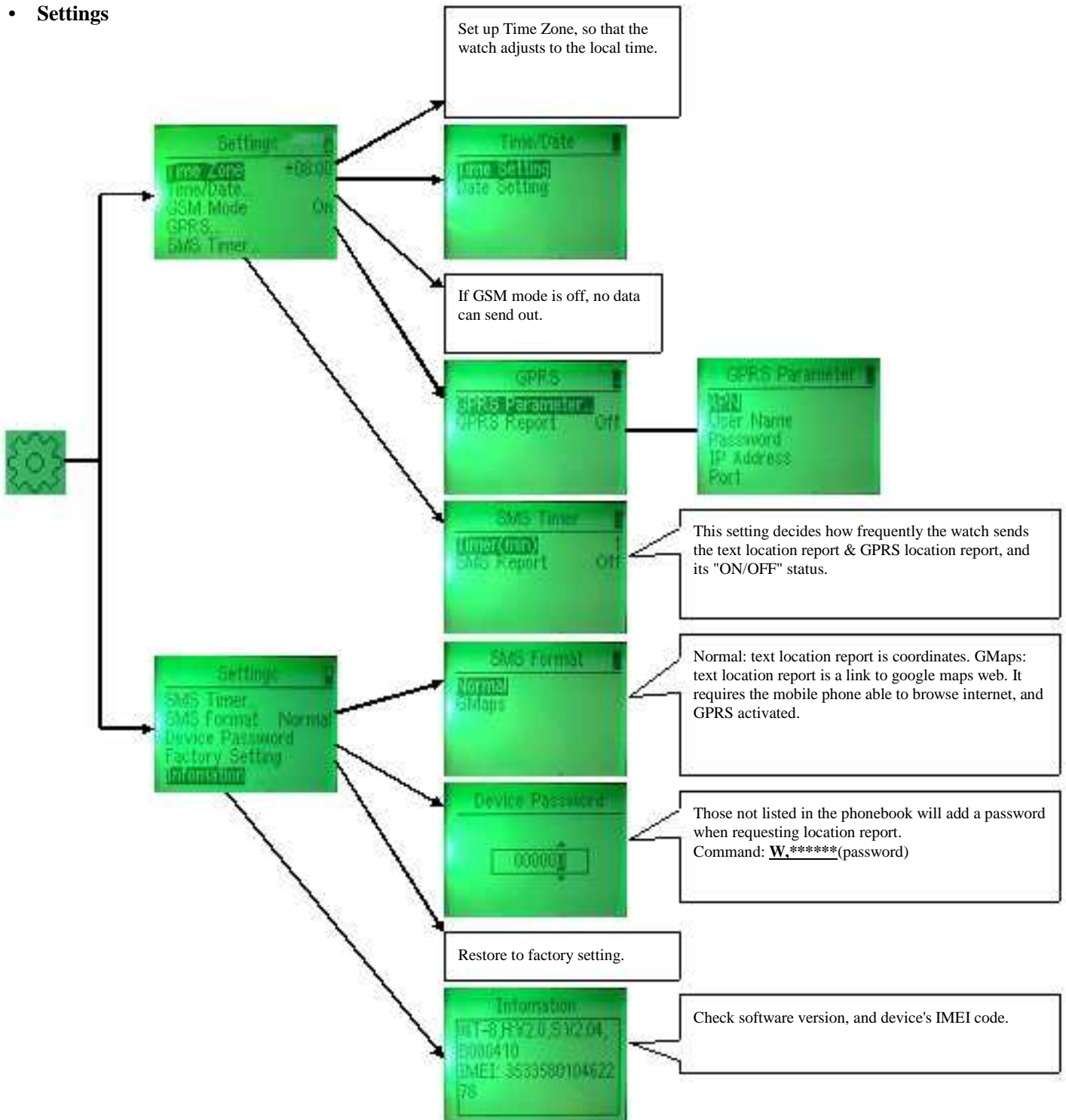


A: Choose "Tracking"

B: Back to choose "View Location", and check locations of friends.

C: Scroll up / down to check which friend you are checking.

• **Settings**



**Note:** In the GPRS setting:

APN: at the end of this user manual, there is an APN table list.

User Name & Password: for GPRS service, the operators of different countries may provide a User Name & Password.

IP Address: set up the public IP (the router or the modem IP) here. For details, please refer to **Clause 6.1**.

Port Number: set up Port Number here. For details, please refer to **Clause 6.1**.

- **Phone Book**



only 11 numbers can be saved on the watch, and are named separately as TIMER, SOS1-5, FRIEND1-5 as follows:



The numbers can be deleted, stored here, and you can make a callout here.

**Note:** The 11 numbers are saved in the watch's memory, not on the SIM card.

- **Text Message**



you can send / read text message here.

- **Call Out**



you can make a callout here.

- **Sports**



you can turn on / off "Stop Watch", specify the activity at "Running or Cycling", and input the weight on which the calorie is calculated based.



- **Alarm Clock**



you can turn on / off alarm, set up the alarm time as well as a beep once every hour.

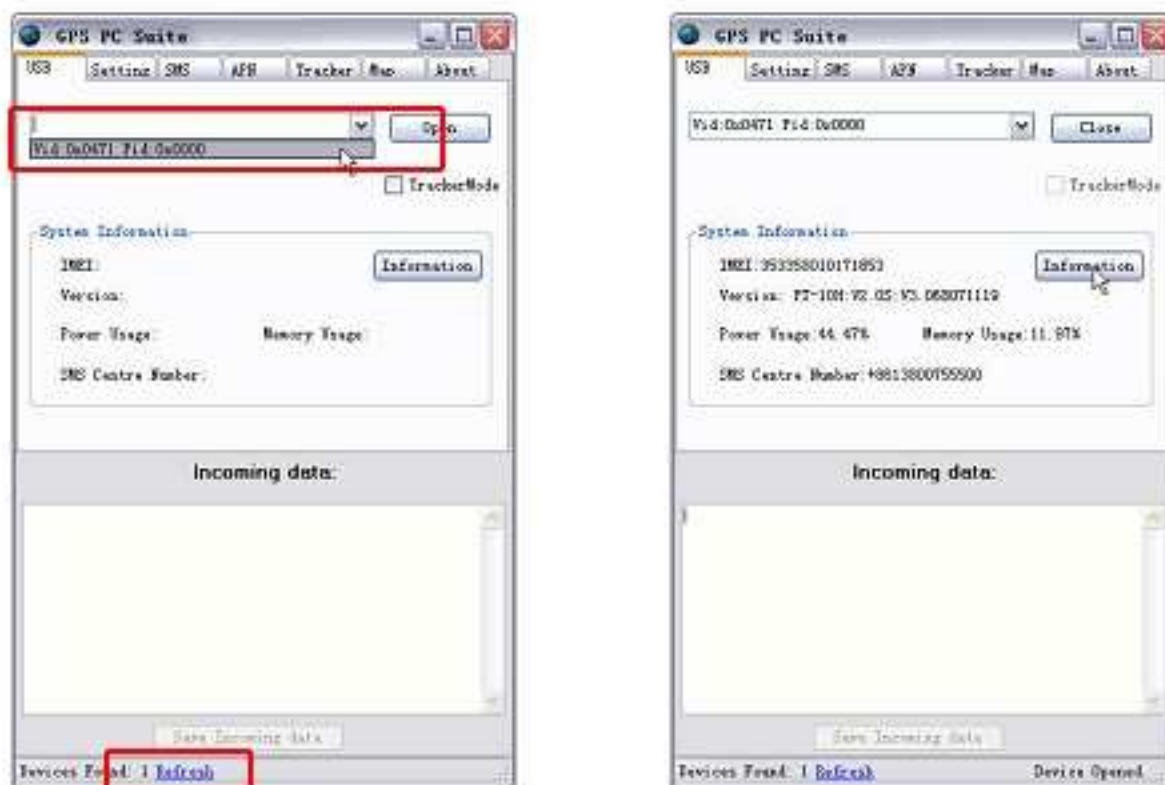


## 4.2 Set up on Computer via USB Cable

You can set up most of the functions by USB cable, except "Sports", "Alarm Clock".

### § Build up Connection

First, turn on the watch until the unit boots in, then connect the unit to computer by USB cable, and click open the unit's software.



Pull down to choose "Vid:0x0471 Pid:0x000" and click "Open" to build up this connection between the computer and the unit. And then you can check the system information by clicking "Information".

**Note:**

1. When all the settings are done, please return to "USB" option, and turn off the connection by clicking "Close". Otherwise, it may cause malfunction at later use.
2. Please make a note of the IMEI code.

#### § Setting of the Phonebook (PIC 1)

Move to tab "Setting". Here can set up the numbers of the phonebook. You can save / delete / read numbers in the phonebook here.

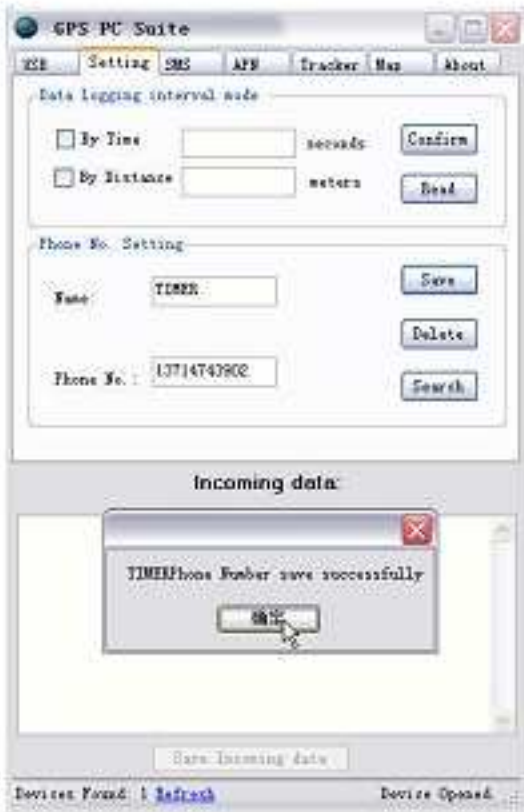
#### § Setting of Tracking Status (PIC 2)

You can set up the watch's tracking status. All the values comply with the parameter. Input all the values properly, and tick up to set up in the right small box and at last click "confirm" to confirm.

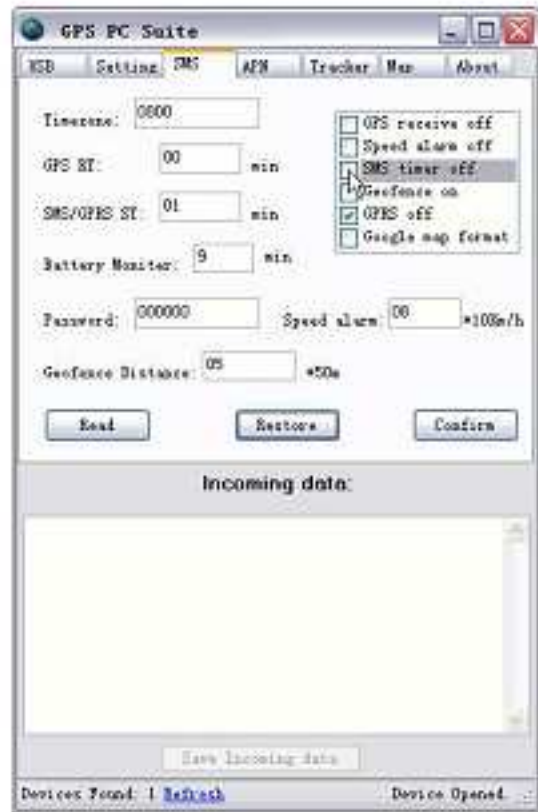
**Read:** Check the old setting.

**Restore:** Click here to restore the default settings.

**Note:** The Time zone consists of 5 digits. The 1st digit indicates '+' (0) or '-' (1), e.g. if the time zone is 00800, you input only 0800, while for 11200, you need input -1200, which must include the '-'.



PIC 1



PIC 2

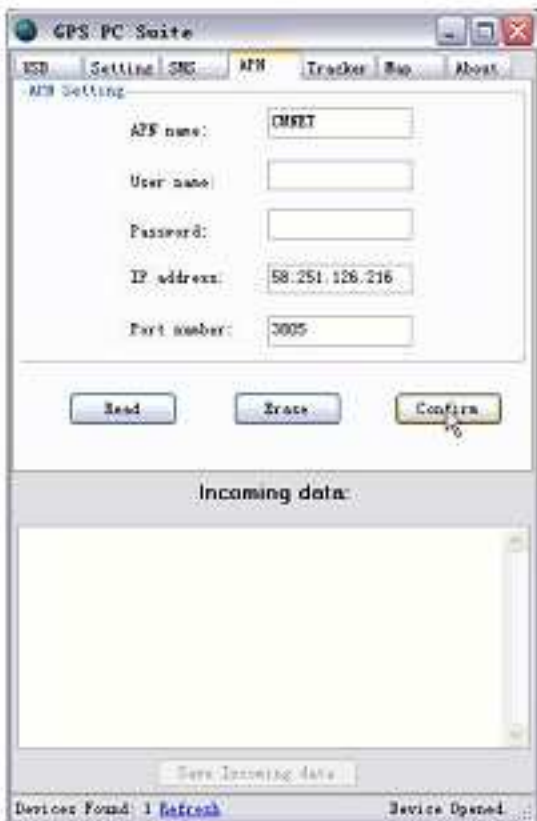
## § APN Setup

Input the APN, Username, Password, IP address, Port Number respectively, and click "Setting" to confirm.

**Read:** Read the old settings.

**Erase:** Erase the old settings.

**Note:** Please refer to the below for how to set up APN, IP address and Port number.



**Note: When configuring the unit via USB cable, you can't send SMS to the unit, for the GSM module is turned off at the time.**

### 4.3 Set up by SMS commands

You can set up the watch by SMS commands as below.

#### § Commands List

This list includes all the commands. It will tell you how to set up / check the watch's working status, get the location reports.

Working	Command	Definition	Remarks
Setup	S,SET:xxxxxxxxpppp ppxxxx	Establish/Change the "SET" parameter, to set up the unit's working status.	Refer to the below.
	S,SOFF	Turn off the Auto SMS sending.	Auto SMS report relates with Location SMS/GPRS Report Timer It is suggested you turn off this function, if you do not want the auto
	S,SON	Turn on the Auto SMS sending.	location report, otherwise, it will keep sending your location SMS, to cost you much. GPS reception relates with GPS Reception Timer.
	S,ROFF	Turn off the GPS reception.	
	S,RON	Turn on the GPS reception.	
	S,SPDOFF	Turn off the Speeding Alarm.	
	S,SPDON	Turn on the Speeding Alarm to get alerted when the speed limit is breached.	
	S,GEOFENCEOFF	Turn off the Geofence.	
	S,GEOFENCEON	Turn on the Geofence to specify the centre point of Geofence.	
	S,GPRSOFF	Turn off the auto GPRS location report.	Auto GPRS Sending relates with Location
	S,GPRSON	Turn on the auto GPRS location report.	Report Timer.
	N,NAME:number	Save the number and define the NAME.	E.g. to save number 13714742568 as SOS2, the command is "N, SOS2:13714742568".
	N, NAME: D	Delete the number of Name's.	E.g. to delete SOS2, the command is "N, SOS2: D".
	N, NAME:?	Check the number of Name's.	E.g. to check SOS2's number, the command is "N, SOS2:?".
	S,F	Restore the default setting.	Default Setting: Auto SMS Sending ON; Auto GPRS Sending OFF; GPS Reception ON; Speeding Alarm ON; Geofence ON; Location Report in COORDINATES Password 000000.
	POWER OFF,IMEI	Power off the unit.	
A,APN,username,passwd,IP address, port number	Set up the APN for GPRS tracking on computer.	Refer to the below.	
A,CLR	Clear APN setting.		
D,E	Clear Recorded Waypoints data.		
Location	S,LF:NORMAL	Location report on mobile phone is in	

Inquiry		coordinates.	
	S,LF:GOOGLEMAP	Location report on mobile phone is a link, connecting with Google Map.	To open the link, you can view the real location on mobile phone.
	W	Inquire the location by these two commands.	Numbers not in the phonebook have to input the password to inquire the location.
W,***** <b>(password)</b>			
Check	S,?	Check the unit's working status.	<b>Refer to the below.</b>
	A,?	Inquiry APN status.	
	I,?	Check IMEI number, battery level, and memory level, hardware version and software version	

**Note:** Make sure there is 1 number saved on the watch. Otherwise you can't configure it by text message.

### § Commands in detail

Every command will get a confirmation after being sent. Hereunder presents several examples for clarifications:

#### Example 1: S,SET: xxxxxxxxxxxppppppxxxxxxxxxxx

The parameter can be established via this SMS command and changed later via this SMS command.



Establish or change the parameter by this SMS command **S, SET:** xxxxxxxxxxvVVVVVxxxxxxxxxxx" (26 digits of parameter without space).

- If the command is incorrect in format, it will reply: **SET! SET data format error!**
- If "SET" is not replaced successfully, it will reply: **SET! SET data save error!** Please try again.

#### Notes:

- For safety consideration, the device's password can't be changed by SMS command; these 6 digits in SMS must be the same with the old one which is pre-set. If the SIM card isn't pre-set before, the default value will be **000000**.
- In case of accident (such as the watch is processing power-off when the SMS is sent out), this operation may cause the parameter setting returns to the default value (including the password).

#### Example 2: S,?

This command can check the watch's working status.



The meaning for the reply of confirmation is as below:

<b>GMT:+08:00</b>	Time Zone is 00800	<b>GPS RT:00</b>	Fix GPS with no interval
<b>SMS ST:01</b>	To report a location every 1 minute	<b>GPS R:on</b>	GPS reception is on
<b>S Timer: off</b>	SMS sending is off	<b>B Alarm:9</b>	Auto check the battery level every 9 minutes
<b>Geo:05</b>	Geofence district is 250m in radius	<b>SPD:07</b>	Speed limit is 70km/h
<b>SPD:ON</b>	Speeding Alarm is on	<b>GPRS:on</b>	Auto GPRS sending is on
<b>Geofence:off</b>	Geofence function is off	<b>LF:NORMAL</b>	Location report is in coordinates
<b>Save by time:1s</b>	Record the waypoints in every 1 second.		

### Example 3: A, APN, username, password, IP address, port number

To view the location on computer via GPRS, you need activate the GPRS function: first to set up APN; second to turn on GPRS (refer to the above Commands List.). To set up APN as below:



<b>APN</b>	Please refer to the last APN table or consult with the operator if not available in the table.	<b>Username/ Password</b>	Some operators may provide Username & Password for using GPRS. Check with the operator if you don't know. If they don't exist, you can leave <b>two commas",,"</b> in their places.
------------	--	---------------------------	---

<b>IP address</b>	Public IP (router or modem's IP)	<b>Port Number</b>	Related the computer's IP address.
-------------------	----------------------------------	--------------------	------------------------------------

**Note:**

- If APN, username, password do not change when you re-set the watch, you can leave three commas in their places. In fact, as long as any index of the command does not change, you can send the command this way.
- The IP address in this command should be public IP address, say Router's / Modem's IP address. (Public IP address is assigned by the ISP (Internet Service Provider). You can check the public IP address by logging on to your router. (Refer **Clause 6**) or on this reference web: [www.myipaddress.com](http://www.myipaddress.com)
- After GPRS data comes into router, router will forward the data to one of the computers via the Port number. The Port number is related with the computer's private IP address. Please set up the "forwarding rule" on router. (Private IP address is the local IP. You can check it on your computer by DOS command: [winipcfg \(Windows98\) OR ipconfig \(Windows2000/XP\)](#).) (Refer to **Clause 6**)

## 5 SMS Tracking

There are two inquiry modes:

**NORMAL:** You can check the location by coordinates.

**GOOGLEMAP:** You can check the real location with a mobile phone. The mobile phone must be able to browse the internet.

### 5.1 Change the Inquiry Mode

You can send a SMS command to change the inquiry mode. The SMS command is as below:



You can send "S, LF: NORMAL" to the watch to switch to NORMAL mode.

### 5.2 In Normal mode

By SMS



**Note:** Any number can send "W+Password" to check the location, while only numbers saved can send "W" to check the location.

### By Phone Call



**Note:** Only numbers saved can dial up the watch. If you cancel the call by Button A without answering it, or don't pick up the call until it hangs off by itself, the watch will send out a location report.

## 5.3 In GOOGLEMAP mode

### By SMS



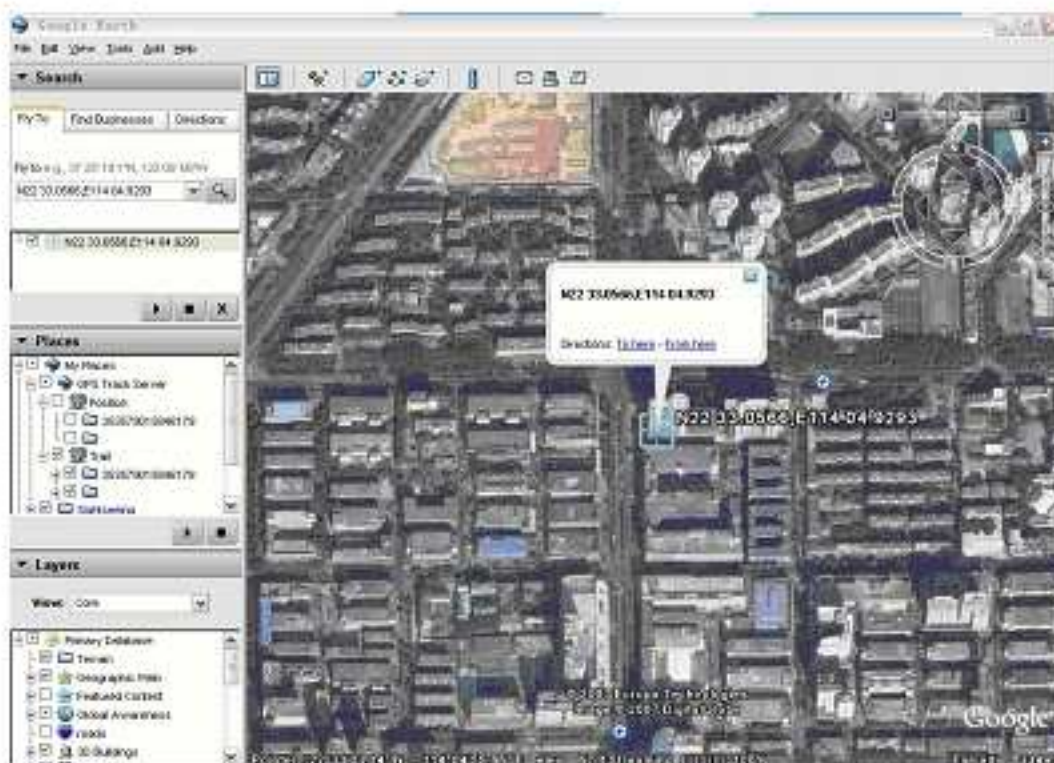
### By Phone Call

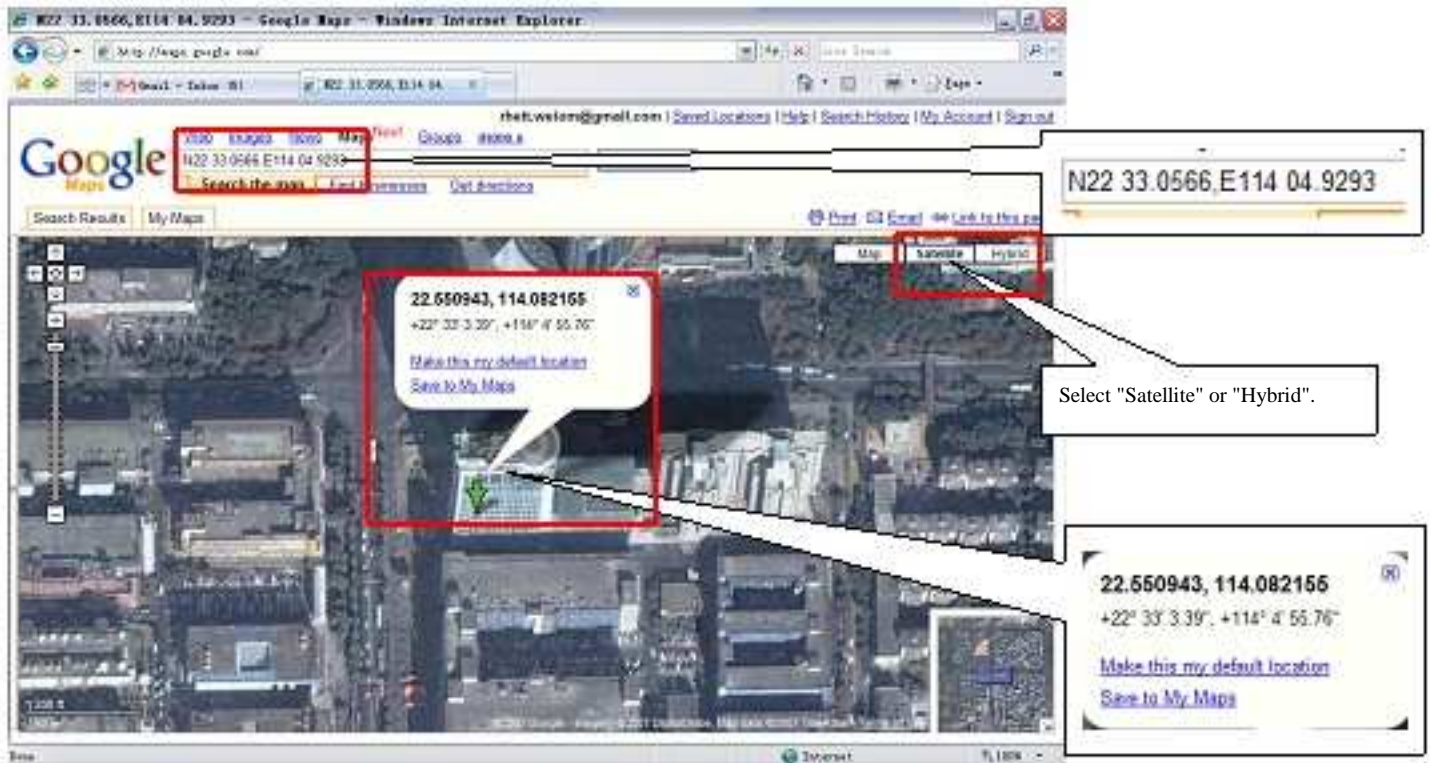


## 5.4 Track On Google Earth & Google Map

After having received the coordinate, manually input it to Google Earth (download from [earth.google.com](http://earth.google.com)) or Google Maps ([maps.google.com](http://maps.google.com)), then you can find the real location on the map.

**Note:** The received coordinate is this: **N, Lat: 2233.0361, E, Lon: 11404.9644**, but when you input it, you should use this format: **N22 33.0361, E114 04.9644**. There is a space between N22 and 33.0361; E114 and 04.9644.





## 6 GPRS Tracking

Before getting GPRS tracking to work, please set up APN, IP address, Port number. For APN, you can refer to the table at the end of this manual. For IP address, Port number, it is introduced as below:

### 6.1 Check APN, Set up IP Address & Port Number

#### § APN

There is a table for APN all around the world. Please refer to it for APN. We don't guarantee its validity, so if it doesn't work, please consult your service operator for information.

#### § Set up IP Address & Port Number

There are two ways for internet: **Router & Modem**. The setup will vary accordingly. Modem is easy of setup comparatively.

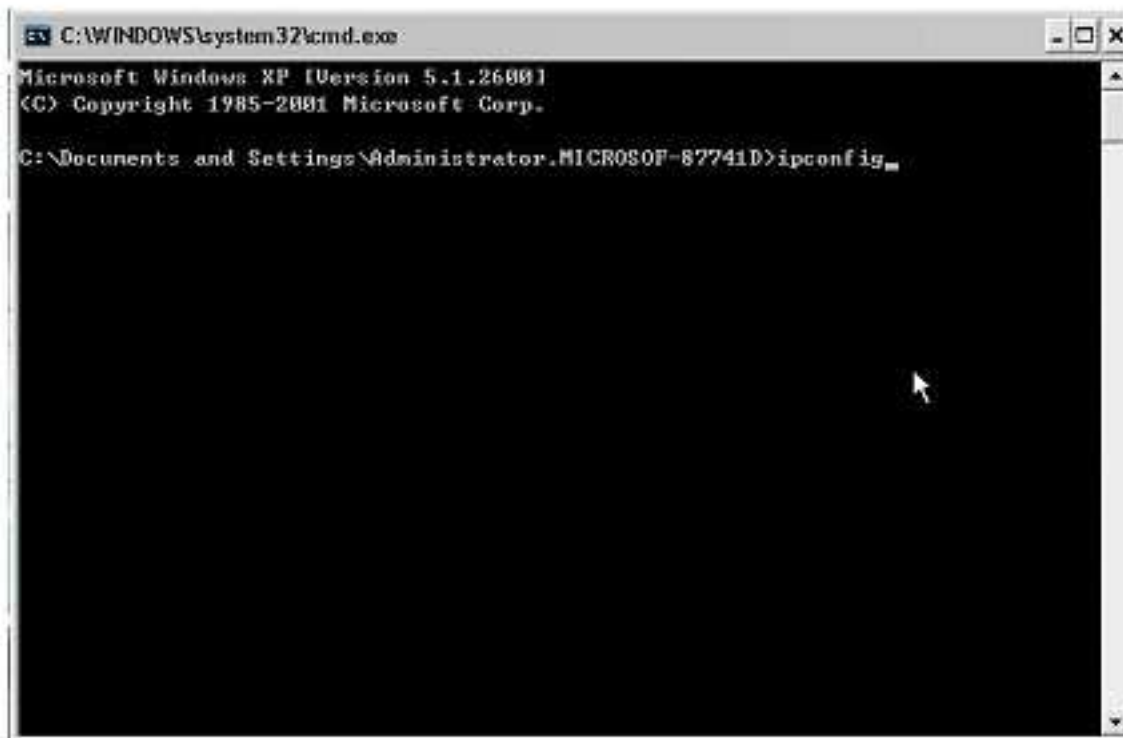
#### **Router:**

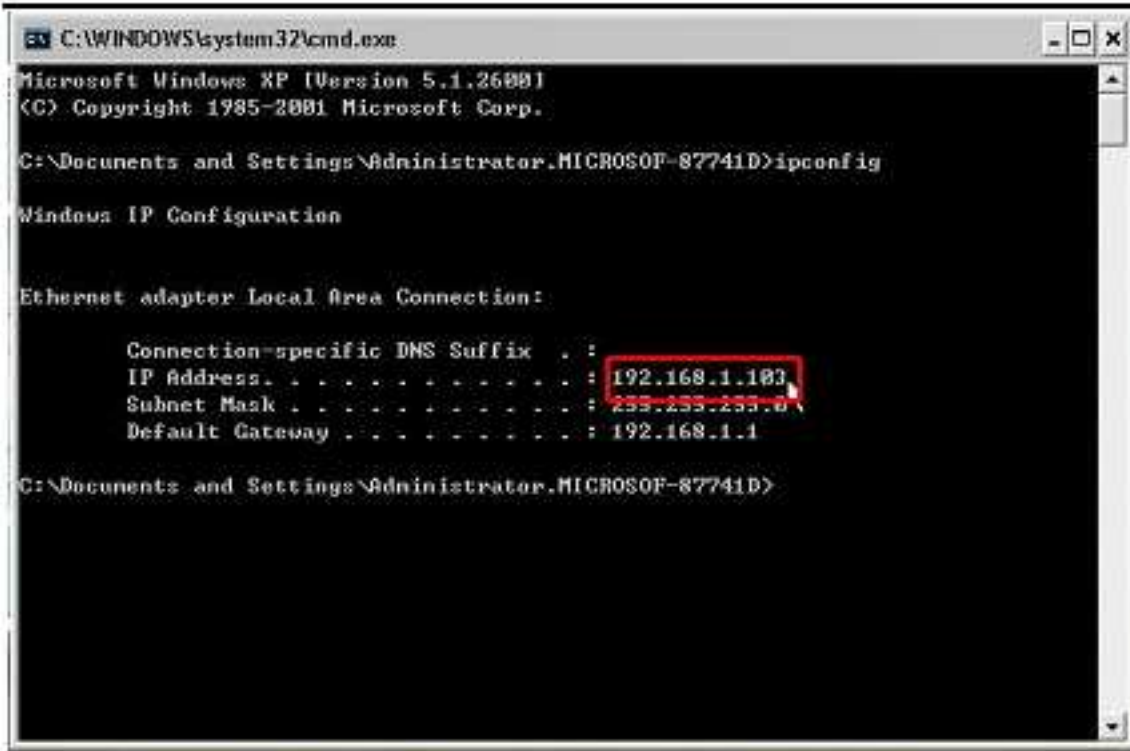
Under a router, there can be several computers connected. To lead the GPRS location data to the specified computer, you should assign the location to watch, and do some settings on the router.

First check out the computer's IP under the router as below:



Input "ipconfig":





Set up the router. Usually, you can log into the router by <http://192.168.1.1> or <http://192.168.0.1> or refer to the router's user manual for information.



Enter your computer's IP Address and Port Number into appropriate text box.



**Note:**

1. There will be several options for making different configurations. Please choose the right place. Usually, the place is called **Port Forwarding / Forwarding Rules** and so on.
2. Make sure the port number will not be pre-occupied, such as 8080 etc.

The completed setting as below:



### Modem:

There is no other computer under a modem, so you just specify a port number at random (just make sure it is not pre-occupied by system.), and assign the modem IP to watch.

## 6.2 Start Tracking

Open the software PC Suite, and tick the "Mode", it will auto jump to tab ". **Then turn on the GPRS sending and input the IMEI code**, and at last tick up "Start/Stop GPS Track Server" to open the Google earth automatically.

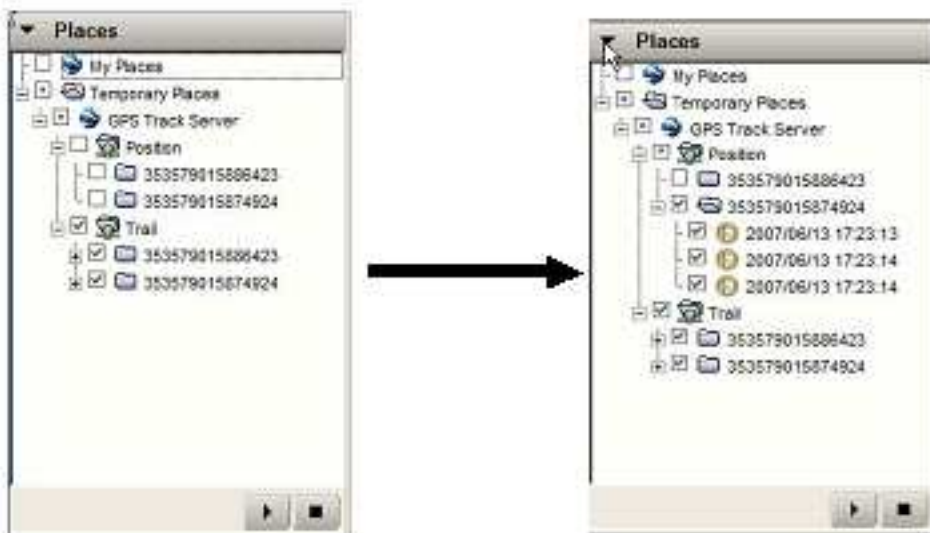
When there are two units, you can designate different colors for them by clicking "color".

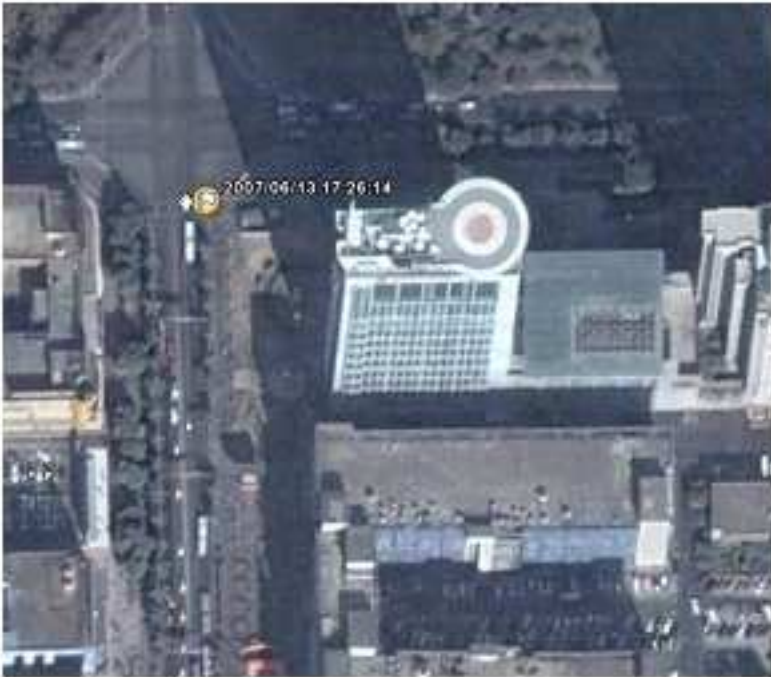
**Note:** Make sure the firewall is off, which will block the GPRS data.



In the left column on Google earth, you can find the GPS Tracker Server in the **Temporary places**.

Please collapse the folder by clicks. After receiving data from watch, the software marks out the location on the Google earth. You can find them in **Position** folder.





Tick up the box of **Trail** folder, and you can line up the waypoints in a route in the Google earth.



**Note:** When using GPRS tracking, if you do not need SMS sending, it is recommended to turn off the SMS sending by "S, SOFF".

## 7 Data Logger

It can record 54,000 waypoints at maximum. With those points, you can check the history route on a map on your computer.

### A. Setting of the Logger

Move to "**Setting**". Here can set up the working of the watch's logger, and the phonebook.

For **Logger**: You can choose to log by time or by distance. The value range for "time" is 1s-99999s, for "distance" 50m-65000m. To click "**Read**", you can check the preset value.

**Note:** The value below 50m will cause errors in position.

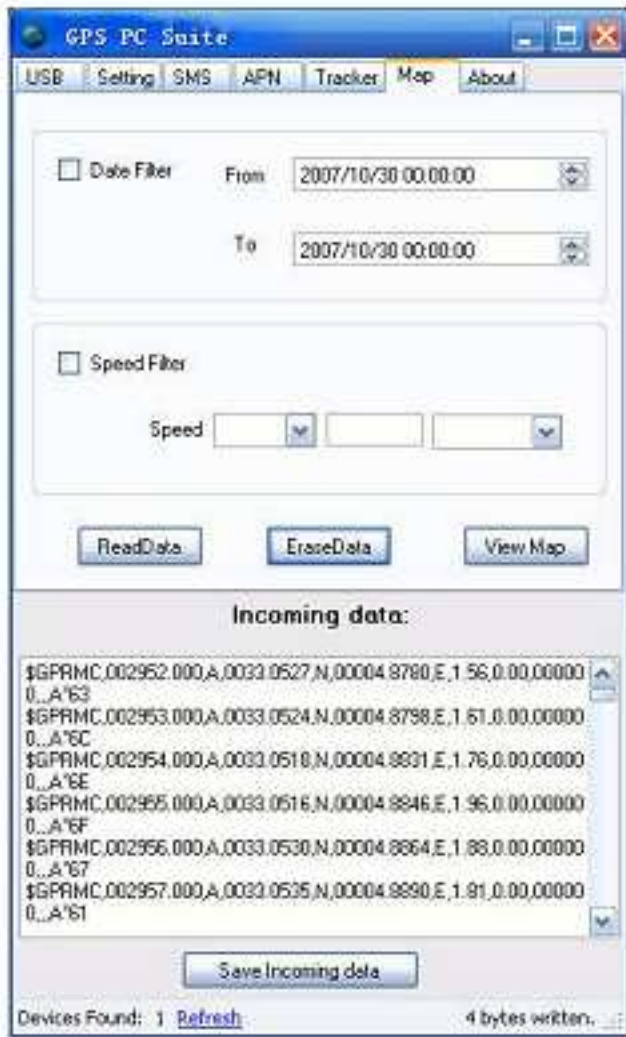


## B.View the Recorded Waypoints

First click "**Read**" to download all the waypoints to computer, and then choose the "**date filter**" and the "**speed filter**" to view the specified waypoints. After choosing the filter, click "**View Map**", and Google earth will open automatically, and display the waypoints accordingly.

When you want to empty the recorded waypoints, please click "**Erase Data**".

**Note:** When the memory is full, the watch will send an alert to TIMER number. In case there is no / a false TIMER number or any other reasons causing the alert sending fails, GSM indicator will show "×" (means "unavailable"), and in this case, you can not edit the phonebook, but it does not influence "callout" & "answer the call".



### C. Photo Logging

When you record the waypoints outside, you can take photos at the points of interest. After coming back, you can synchronize the photos of the camera with the points of interest recorded on the data logger, to view the photos and the waypoints simultaneously on the map.

#### a) Set the GPS data logger and Camera

First thing to do is synchronize the time of your watch and camera. You can do in two different ways:

1). If you didn't change its setting, your watch records the track log with the GMT time (Greenwich Meridian Time) also know as UTC (Universal Time Co-ordinated). Set the time of your camera to GMT.

You can see the actual GMT time at the bottom of this webpage (be precise at the second level):

<http://wgp.greenwichmeantime.com>

Setting your camera to GMT is practical since you won't have problems for summer/winter time or when you travel through time zones. Also set the camera date if necessary.

2). Set the local time of the camera precisely to the same local time indicated by the watch. Also set the camera date if necessary.

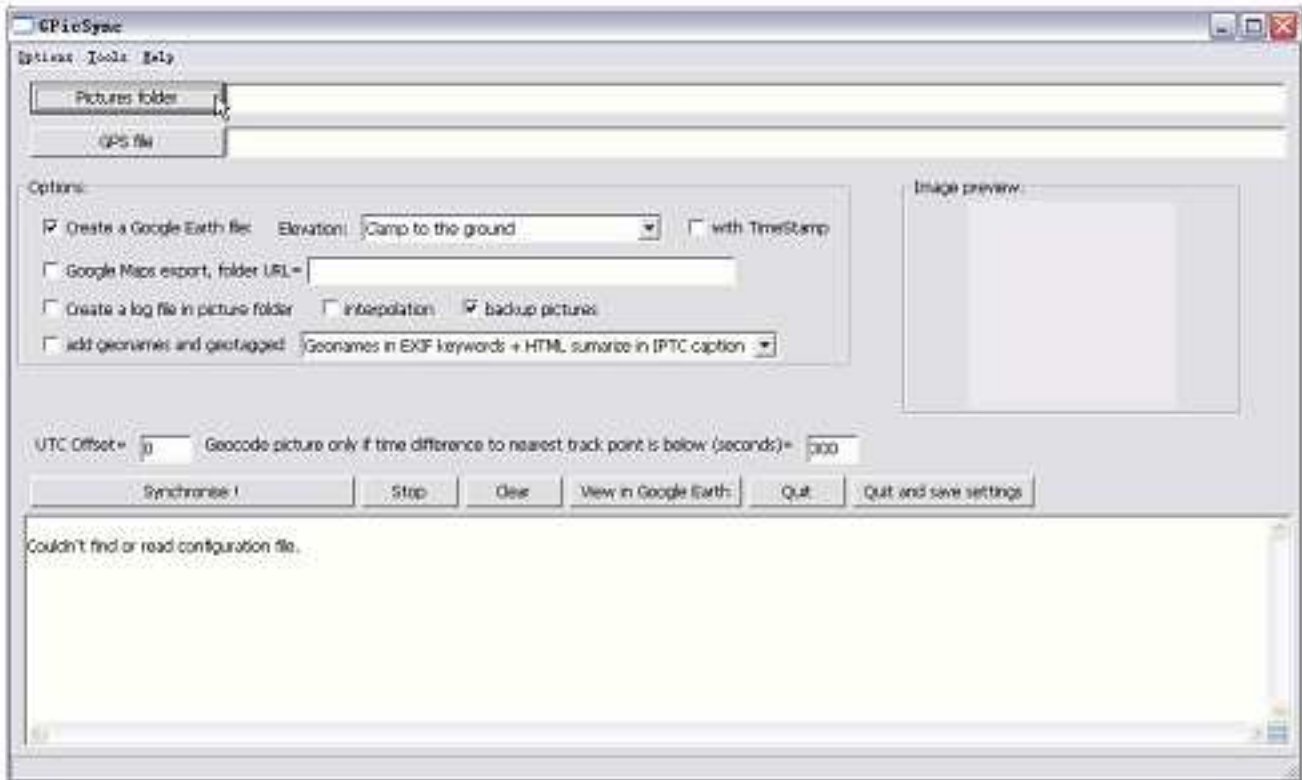
#### b) Go outside and Shoot

Take the watch with you and make sure that it is recording a track log. Keep your watch ON during all the time you take pictures.

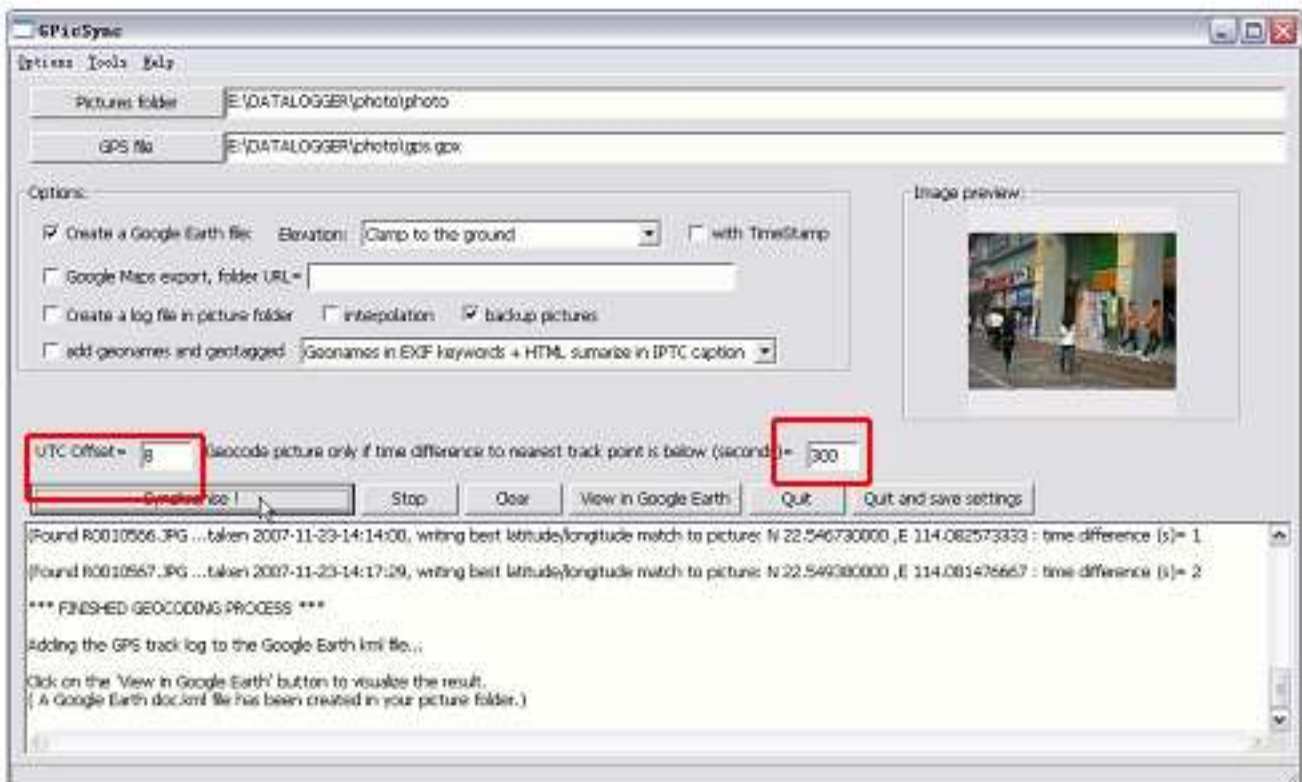
**c) Come back home and sync**

Please download the photos from the digital camera, and save the recorded waypoints in format: \*.txt.

Launch "GipcSync":



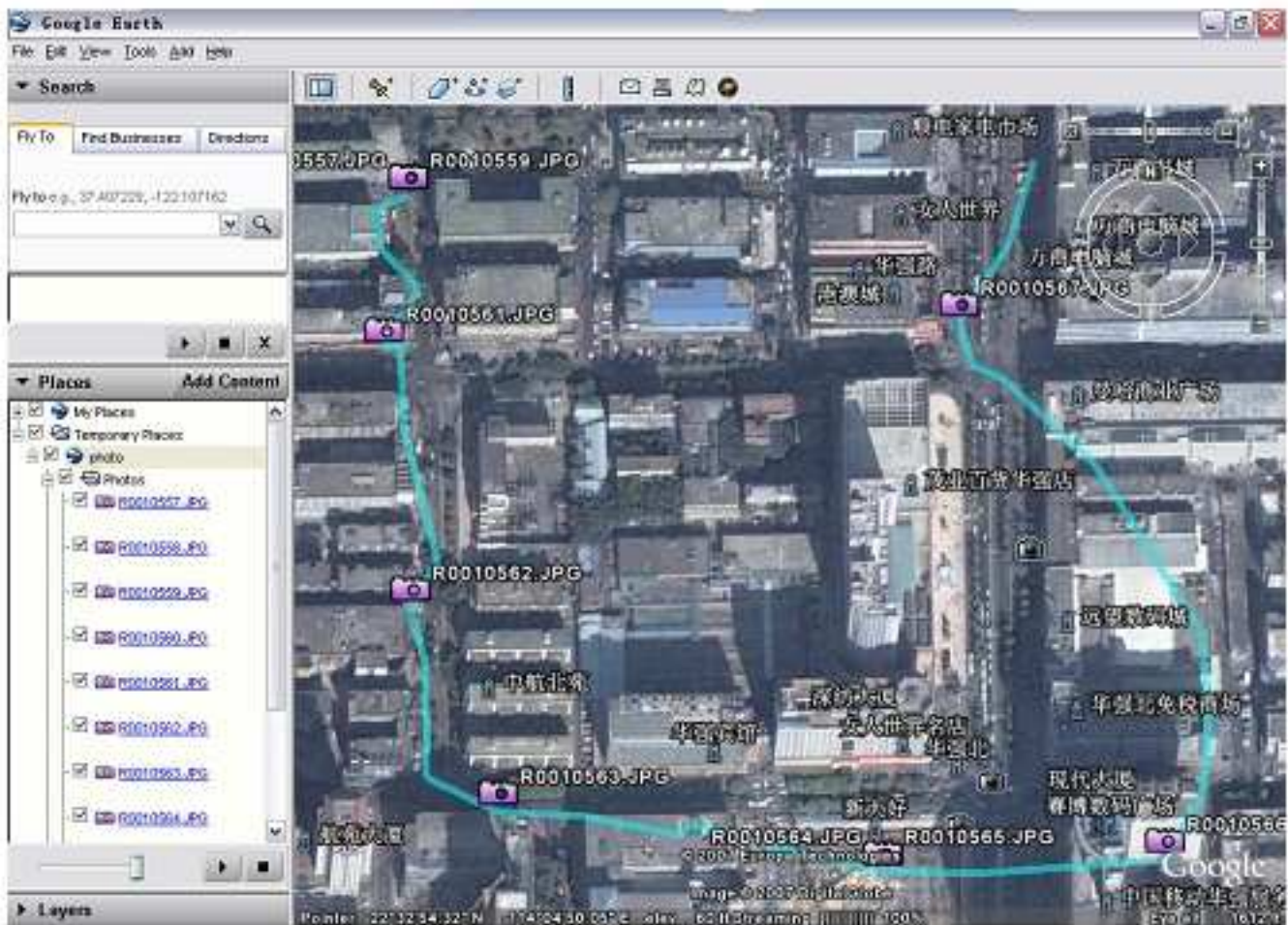
Click "Pictures folder" to import the photos, and click "GPS file" to import the waypoints saved in the file:\*.txt. And press "Synchronise" to synchronize the photo and the waypoints:



**Note:**

- Depending on the way you've set your camera and watch, please indicate the UTC Offset as below:  
+1 in France, 0 in the UK, -8 for PST, -5 for EST etc, You may need to add an hour for summer local time depending of your country policy. 0 if your camera is at GMT time.
- There's also an indication of the time difference between the nearest track point and the picture (you should see a few seconds difference). If this difference is important (above a hundred seconds) there's probably something wrong in your time setting. In particular check that you've indicated the right UTC offset (and maybe add an hour if you are in a summer daylight saving zone). By default GPicSync doesn't Geocode photos if the time difference is above 300 seconds but you can adjust this threshold in the interface ("Geocode only if time difference is less than (seconds)="). This could be useful on some GPS if you make a pause and the GPS stops recording.

Then click "View in Google Earth" to start the Google Earth automatically:



Click on the icon to view the photo:



## 8 Troubleshooting

	Troubles Description	Solution & Causes
1	The popup stays still doesn't, disappear when using GPRS tracking.	GPRS transmission is not stable. It builds up the connection, but doesn't send GPRS data. Please cancel the popup.
2	There is an IP address existing in "Connected Clients".	It doesn't relate with the computer or the watch. It is assigned by GPRS service provider. It doesn't affect watch's working.
3	not work on Vista system.	The USB driver is for XP operation system only.
4	Red light stays on still.	The watch doesn't read out its SIM card. SIM card may be damaged, or there is an AD to be confirmed as it is used on mobile phone.
5	There are more than 1 routers deployed in tree structure.	The IP address set on watch's SIM card will be the outermost router's one, and the Port Number will be coherent in all the routers. Above router's IP will be assigned to the lower one, so that the GPRS data will be led to the right computer.
6	The logger can't record more waypoints.	The memory is full, and the user should erase the recorded data manually.
7	No incoming GPRS data on computer	GPRS tracking doesn't work with wireless internet connection.
8	GSM signal is unavailable ("x")	No SIM card or memory is full. (refer to <b>B</b> in <b>Clause 7</b> )

## 9 Worldwide APN (Access Point Name) List

Country	Mobile operator	Access point name
Argentina	Personal	gprs.personal.com
Argentina	Unifon	internet.gprs.unifon.com.ar
Australia	Telstra	telstra.internet
Australia	Optus	internet
Australia	Three	3netaccess
Australia	Vodafone	internet
Austria	Max Online	gprsinternet
Austria	One	wap.one.at
Belgium	Orange	orangeinternet
Belgium	Mobistar	web.pro.be
Belgium	Proximus	internet.proximus.be
Bermuda	AT&T	proxy
Bermuda	Mobility	net.bm
Brazil	Claro	claro.com.br
Brazil	Oi	gprs.oi.com.br
Brazil	TIM	tim.br
Bulgaria	Mobitel (Mtel)	inet-gprs.mtel.bg
Canada	Fido	internet.fido.ca
Canada	Rogers AT&T	internet.com
Chile	Entel PCS	imovil.entelpcs.cl bam.entelpcs.cl
Chile	Telefonica GSM	web.tnovil.cl
China	China Mobile	cmnet
Croatia	VIPNET	gprs.vipnet.hr
Czech Republic	Eurotel	internet
Czech Republic	Oskar	internet
Czech Republic	Oskar prepaid cards	ointernet
Czech Republic	T-Mobile	internet.t-mobile.cz

Denmark	TDCmobil	internet
Denmark	Orange	web.orange.dk
Egypt	Vodafone	internet.vodafone.net
Dominican Republic	Orange Dominicana	orangenet.com.do
Finland	Telia Mobile	internet
Finland	DNA	internet
Finland	Sonera	internet
Finland	Radiolinja	internet
Finland	Saunalahti	saunalahti
France	Orange	orange.fr
France	SFR	websfr
France	Bouygues Telecom	eBouygTel.com
Germany	D2 Vodafone	web.vodafone.de
Germany	E-Plus	internet.eplus.de
Germany	O2	internet
Germany	Quam	quam.de
Germany	T-Mobile D1	internet.t-d1.de
Greece	Vodafone	internet.vodafone.gr
Greece	Telestet	gint.b-online.gr
Greece	Cosmote	internet
Hungary	Vodafone (Prepaid "Optimized")	vitamax.internet.vodafone.net
Hungary	Vodafone (Prepaid "Standard")	vitamax.snet.vodafone.net
Hungary	Vodafone (Postpaid "Optimized")	internet.vodafone.net
Hungary	Vodafone (Postpaid "Standard")	standardnet.vodafone.net
Hong Kong	CSL	internet
Hong Kong	Orange	web.orangehk.com
Hong Kong	New World	internet
Hong Kong	People	internet
Hong Kong	SmarTone	internet

Hong Kong	Sunday	internet
India	Orange, Hutch	www
Iceland	Siminn	gprs.simni.is
India	BPL Mobile	bplgprs.com
India	Airtel	airtelgprs.com
Indonesia	Telkomsel	internet
Ireland	O2	internet
Ireland	Vodafone	live.vodafone.com
Israel	Cellcom	internetg
Israel	Orange	internet
Italy	TIM	uni.tim.it ibox.tim.it
Italy	Vodafone Omnitel	web.omnitel.it
Italy	Wind	internet.wind
Latvia	Latvia Mobile Telefonte	internet.lmt.lv
Luxembourg	LUXGSM	web.pt.lu
Luxembourg	Tango	internet
Malaysia	Celcom	celcom.net.my
Mexico	Movistar	internet.movistar.mx
Mexico	Telcel	internet.itelcel.com
Montenegro	Monet	gprs.monetcg.com
Netherlands	T-Mobile	internet
Netherlands	KPM Mobile	internet
Netherlands	Orange	internet
Netherlands	O2	internet
Netherlands	Vodafone (normal)	web.vodafone.nl
Netherlands	Vodafone (business)	office.vodafone.nl
New Zealand	Vodafone NZ	www.vodafone.net.nz
Norway	Netcom	internet.netcom.no

Norway	Telenor	internet
Pakistan	Ufone	ufonc.internct
Paraguay	Personal	internet
Paraguay	Tigo	internet.tigo.py
Philippines	Smart	internet
Philippines	Globe	internet.globe.com.ph
Poland	Era	erainternet
Poland	Idea	www.idea.pl
Poland	PlusGSM	www.plusgsm.pl
Portugal	Optimus	internet
Portugal	TMN	internet
Portugal	Vodafone (Telcel)	internet.vodafone.pt
Romaria	Connex	internet.connex.ro
Romaria	Orange	internet
Russia	BeeLine	internet.beeline.ru
Russia	Megafon	internet.aw
Russia	MTS	internet.mts.ru
Russia	PrimTel	internet.primtel.ru
Saudi Arabia	Saudi Telecom	Jawalnet.com.sa
Serbia-Montenegro	Mobtel Srbija	internet
Serbia-Montenegro	Telekom Srbija	gprsintemet
Singapore	M1	sunsurf
Singapore	Singtel	internet
Singapore	Starhub	shwapint
Slovakia	Eurotel	internet
Slovakia	Orange	internet
South Africa	MTN	intcrnct
Spain	Amena	amenawap

Spain	Telefonica (Movistar)	movistar.es
Spain	Vodafone	airtelnet
Sweden	Telia	online.telia.se
Sweden	Vodafone SE	internet.vodafone.net
Switzerland	Swisscom	gprs.swisscom.ch
Switzerland	Orange CH	internet
Switzerland	sunrise	internet
Switzerland	UMC	www.umc.ua
Taiwan	Chunghwa Telecom	cmome
Taiwan	Far EasTone	fetnet01
Taiwan	KG Telecom	internet
Taiwan	Taiwan Cellular	internet
Thailand	AIS	internet
Thailand	DTAC	www.dtac.co.th
Turkey	Avea	internet
Turkey	Aycell	aycell
Turkey	Telsim	telsim
Turkey	Turkcell	internet
UK	Jersey Telecom	pepper
UK	O2	mobile.o2.co.uk
UK	T-Mobile	general.t-mobile.co.uk
UK	Vodafone UK	internet
UK	Orange	orangeinternet
Ukraine	Kyivstar GSM	www.kyivstar.net
Ukraine	UMC	www.umc.ua
USA	T-Mobile	internet2.voicestream.com
USA	AT&T	proxy
USA	Cingular	isp.cingular
Venezuela	Digital TIM	gorsweb.digital.ve
Vietnam	MobiFone	Mobi-gprs-wap